



**Prof. Jon Tugores**  
Architect

**Prof. Xavier Vancells**  
Phd Architect

**[WWW.THEARCHITECTS.BARCELONA](http://WWW.THEARCHITECTS.BARCELONA)**

The formation of their studio emerges from the convergence of both architects and their respective practices, whose professional trajectories have evolved in a continuous dialogue between architectural practice, built work, and academic teaching. Both architects bring extensive experience in the realization of award-winning projects, alongside a sustained involvement in teaching and research at national and international universities. This dual condition—operating simultaneously within professional and academic spheres—has fostered a critical approach to architecture, in which practice is understood as a form of applied research and teaching as a space for theoretical reflection, experimentation, and disciplinary transmission.

The studio is grounded in the complementarity of methodologies and lines of inquiry that share an understanding of architecture as both an intellectual construct and an operative framework. Knowledge derived from built work directly informs design decisions, while academic activity continuously rearticulates the theoretical foundations, tools, and strategies of the project. Each commission is thus approached as a site of investigation, where conceptual intent, technical resolution, and material construction are brought into a productive and reciprocal relationship.

The practice focuses on projects of high programmatic complexity, conceiving architecture as a system capable of organizing diverse uses, heterogeneous scales, and evolving functional demands. Programmatic density is treated not merely as a technical challenge, but as an opportunity for disciplinary exploration, in which spatial clarity, formal precision, and internal coherence operate as structuring principles of the project.

Environmental coherence is embedded transversally within the design process, understood not only as a set of performance-based criteria but as a critical position in relation to contemporary ecological and territorial conditions. Principles of sustainability, energy efficiency, and resource optimization are integrated from the earliest stages of design, establishing a direct correspondence between architectural form, constructive systems, and climatic conditions. Architecture is thus conceived as a mediating device between natural environments, territorial structures, and the social and cultural dynamics that inhabit them.

From this perspective, the studio operates as a platform for both professional practice and architectural research, committed to the production of a rigorous, contemporary, and responsible architecture. The union of both practices does not simply represent the aggregation of technical and creative capacities, but rather the construction of a shared framework of thought and action, in which built work, theoretical inquiry, and academic teaching function as interdependent dimensions of a single disciplinary practice.

## **MANIFEST**

*Contemporary architecture is situated in a highly complex regime, defined by ecological interdependencies, socioeconomic pressures and a technological accelerationism that reconfigures disciplinary structures. Given this scenario, it is essential to articulate an architecture that integrates systemic resilience and cognitive hyper-technology with the structuring vectors of the project and spatial production.*

---

### **1. Resilience with a systemic paradigm**

Resilience is understood here as an emergent property of architectural systems capable of absorbing alterations, reconfiguring themselves and sustaining continuous operations. It is not only about programmatic adaptation or structural robustness, but about a projectable ecology that incorporates material circularity, technical reversibility and energy metabolism capacity. Resilience thus constitutes a conceptual matrix that operates transversally at all scales of the project.

---

### **2. Hyper-technology with epistemological infrastructure**

The emergence of advanced computing technologies generates an epistemic shift in architectural discourse: the project ceases to be a formal synthesis but becomes an informational device. Generative design, multimodal simulation, hybrid intelligence and robotic manufacturing form a high-intensity algorithmic environment in which the role of the architect is redefined as a critical operator of data flows, heuristics and optimal processes.

---

### **3. Process with iterative ecology**

The project acquires a processual and non-linear character, configured by successive iterations between modelling, verification and material transformation. In this environment, through integrated platforms (BIM, Digital Twins), it establishes a total traceability and a logic of continuous cycle that dissolves the classical borders between research, design and execution. The process is converted into the central generating agent of architecture.

---

### **4. Performative architectures**

The architectural results of this regime are not understood as concrete objects, but as performative systems, capable of deploying measurable behaviours in response to environmental, structural and social vectors. Adaptive façades, topologically optimized structures, responsive materials and environmental interfaces define a new ontological field in the emerging form of the internal logic of the system.

---

### **5. Expanded ecology of the project**

Here we defend an architecture conceived as an expanded ecology that converges in the biosphere, Technosphere and infosphere. The project is to develop a space of articulation between bioclimatic processes, emerging materials and digital infrastructures, with the objective of generating environments that remain simultaneously efficient, adaptive and cognitively integrated.

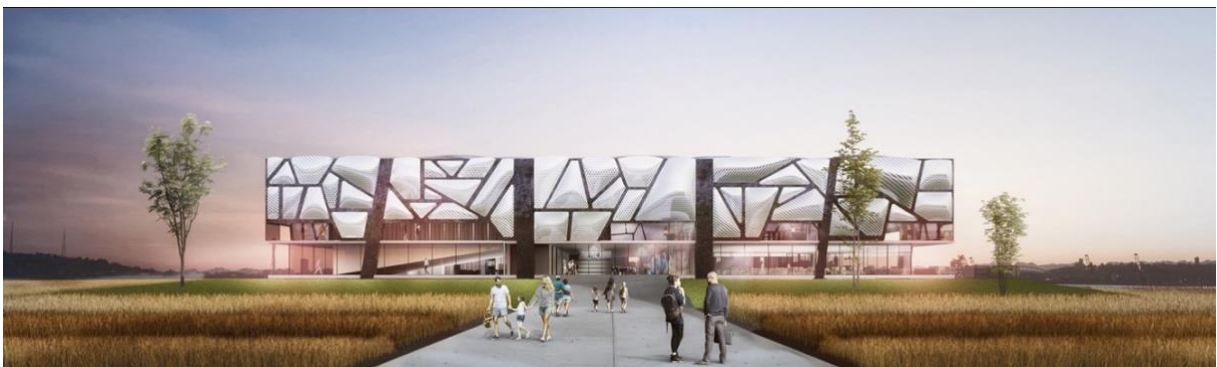
**2025 CINEMA + TV STUDIOS, TERRASSA, BARCELONA**



**2025. CATALAN GOVERNMENT MAIN OFFICE, LLEIDA, CATALONIA.**



**2017 BARILLA EXHIBITION CENTRE & I.+D. PARMA, ITALY.**



**2015. TRAIN PASSAGE, SANT ADRIÀ DEL BESÓS, BARCELONA**



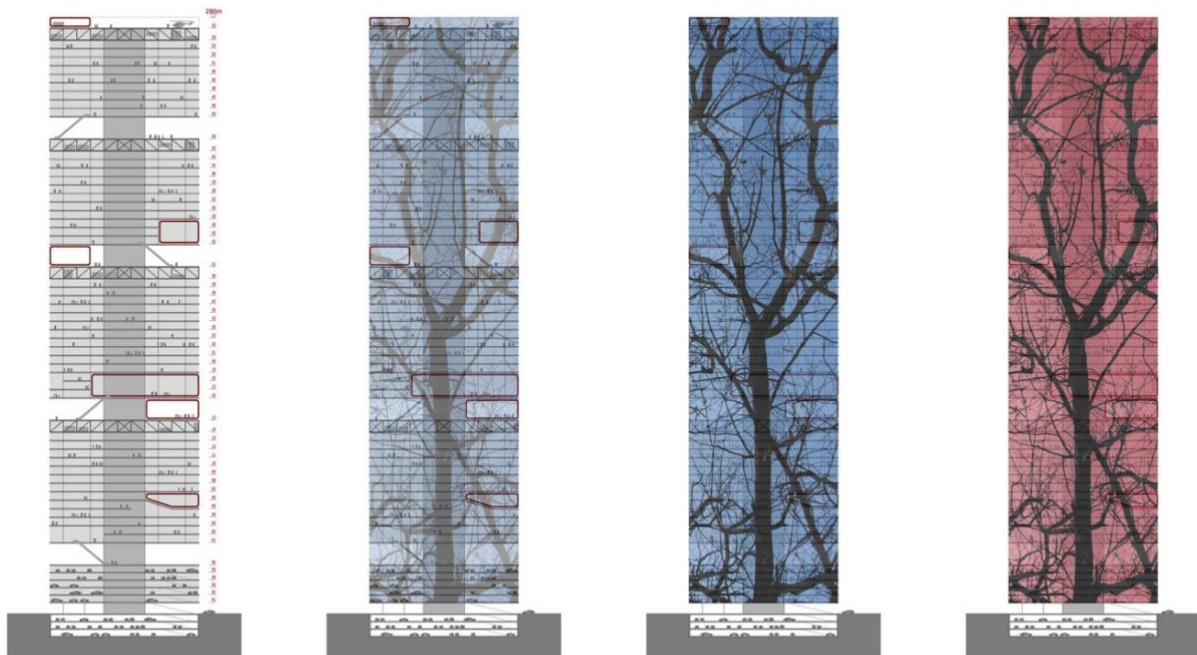
**2007-2015. EEC. CHURCH + LIBRARY + SOCIAL ACTIVITIES + RESTAURANT**



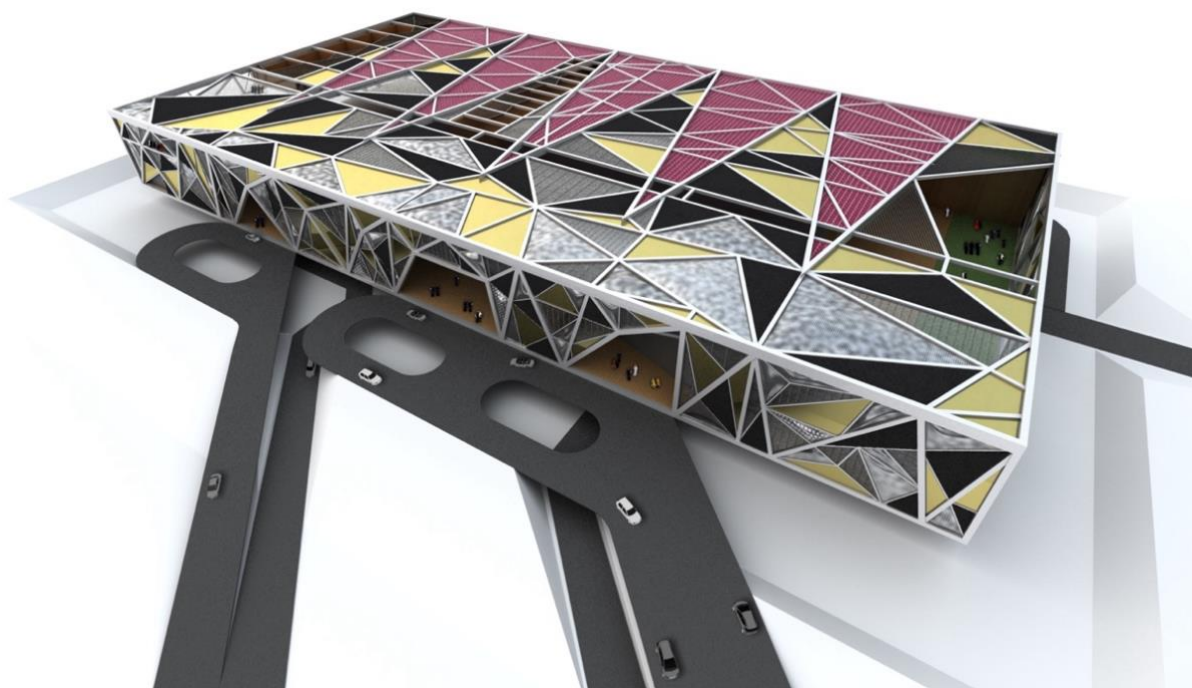
**2010, ATHC CLUBHOUSE, TERRASSA, BARCELONA.**



**2010-present KGT, MULTI-PROGRAM HIGHRISE, MANAMA, BAHRAIN**



**BCH. BAHRAIN CONVENTION HALL, 2010-present.**



**2006, TOWN HALL, SANT CUGAT DEL VALLÉS, BARCELONA**



**2007. HOUSE IN BELLATERRA, BARCELONA**



**2007, HUARTE ART CENTER, NAVARRA**



**CONTACT:****Jon Tugores**

+34 610266188

[jon@thearchitects.barcelona](mailto:jon@thearchitects.barcelona)

**Xavier Vancells**

+34 667511922

[xavi@thearchitects.barcelona](mailto:xavi@thearchitects.barcelona)

**MEDIA + PRESS**

[media@thearchitects.barcelona](mailto:media@thearchitects.barcelona)

**JOBS**

[office@thearchitects.barcelona](mailto:office@thearchitects.barcelona)

**OFFICE:****BARCELONA**

C/ SANT LEOPOLD 101, 018  
08221. TERRASSA, BARCELONA  
+34 937339734

---

**WEBMASTER**

[www.emfasi.com](http://www.emfasi.com)

**GRAPHIC DESIGN**

Pere Manent

[manent@emfasi.com](mailto:manent@emfasi.com)

**COMPUTER IMAGES + AI**

Maad. Santi Mañero

[www.maad.es](http://www.maad.es)

Beats of light. Aña Mañosas

<https://beatsoflight.com>

Prompt Ivan Arellano

<https://prompt-studio.com/>

**PHOTOGRAPHY**

Jordi Bernadó

<https://www.jordibernado.com>

Adrià Goula

<https://www.adriagoula.com/es/>

José Hevia

<https://josehevia.es>

Jordi Miralles

<https://jordimiralles.com>